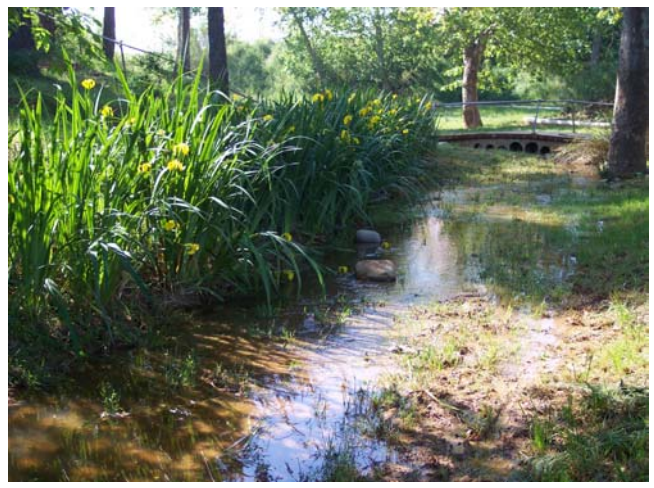


RESTORATION OF THE “TORRENT DE LA ROMEUA“ PARK IN SABADELL (BARCELONA. SPAIN)

Works to improve a wetland area in the Romeua Park in Sabadell, the work include the installation of:

- Fiber roll™, vegetated rolls in the streams perimeter and also in the lengthways of the cemented structures in the park.
- Coconut netting to avoid the erosion processes in the slopes and to cover the cemented structures.
- Units of Plant plug™ installed in the whole area. Plant plugs have a huge capacity to resist the adverse situations as well as to increase the biodiversity of the area.



ESWEG 07/ 005



PROJECT REALISED BY AQUANEA, S.L., MEMBER OF ESWEG

